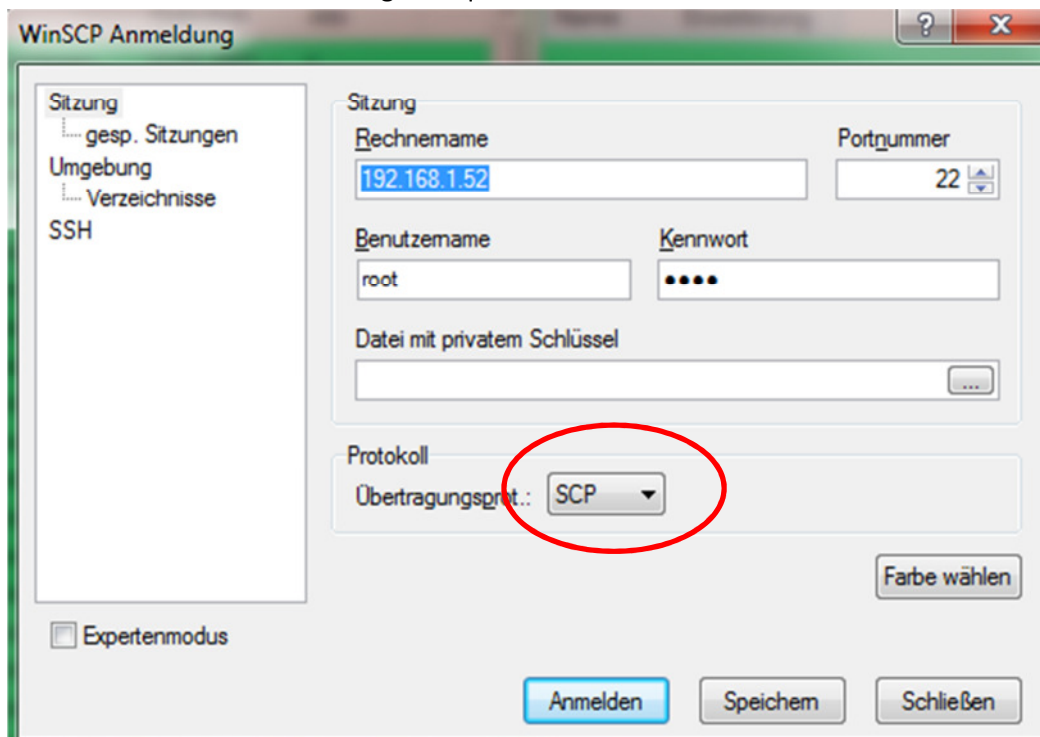


Deaktivieren des WLAN-Modules der Squeezebox Touch

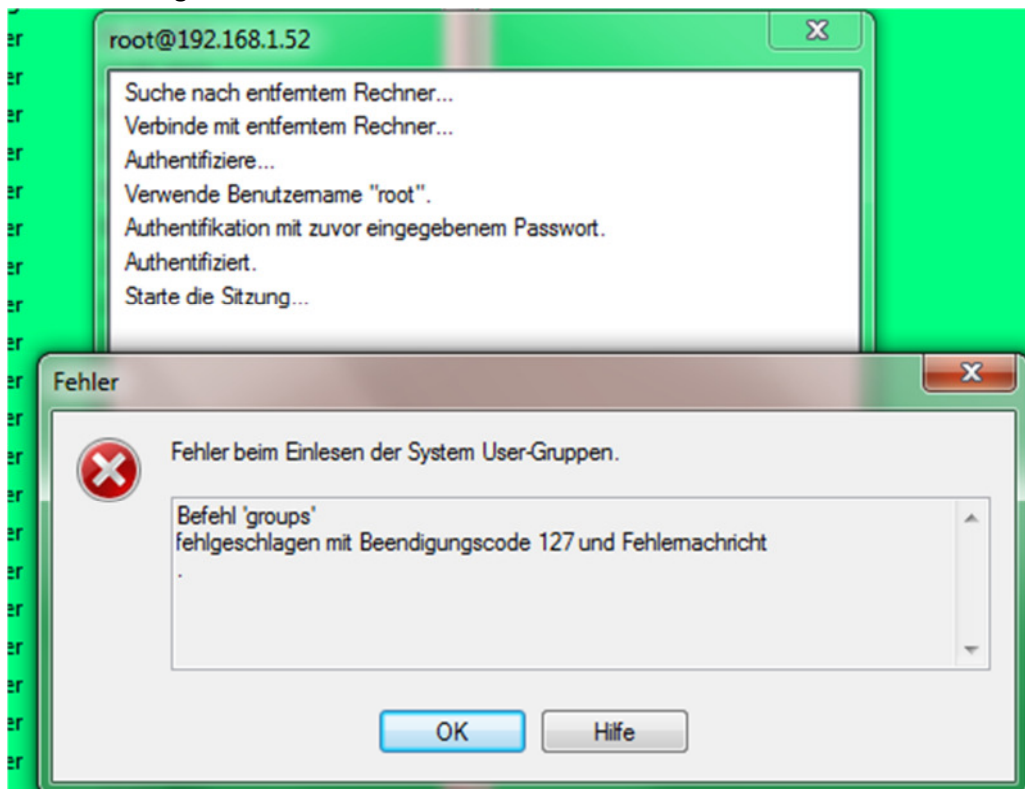
Installation von WinSCP 4.3.2

Einrichten einer SSH Verbindung zur Squeezebox:

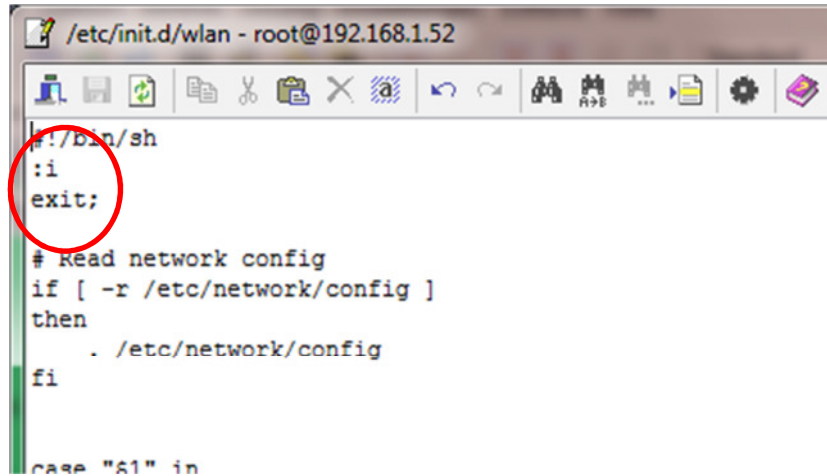


Standard-Passwort der Squeezebox: **1234**

Fehlermeldung ist kein Problem:



Datei im rechten Fenster editieren: /etc/init.d/wlan/wlan:



```
/etc/init.d/wlan - root@192.168.1.52

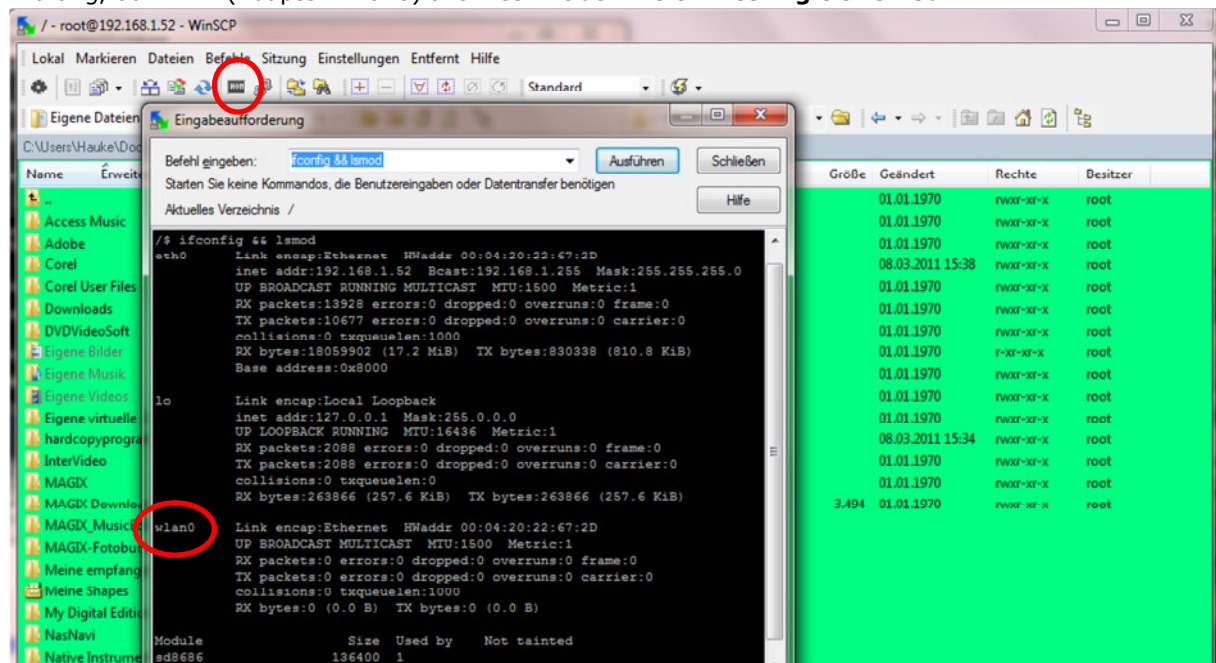
#!/bin/sh

:~
exit;

# Read network config
if [ -r /etc/network/config ]
then
    . /etc/network/config
fi

case "$1" in
```

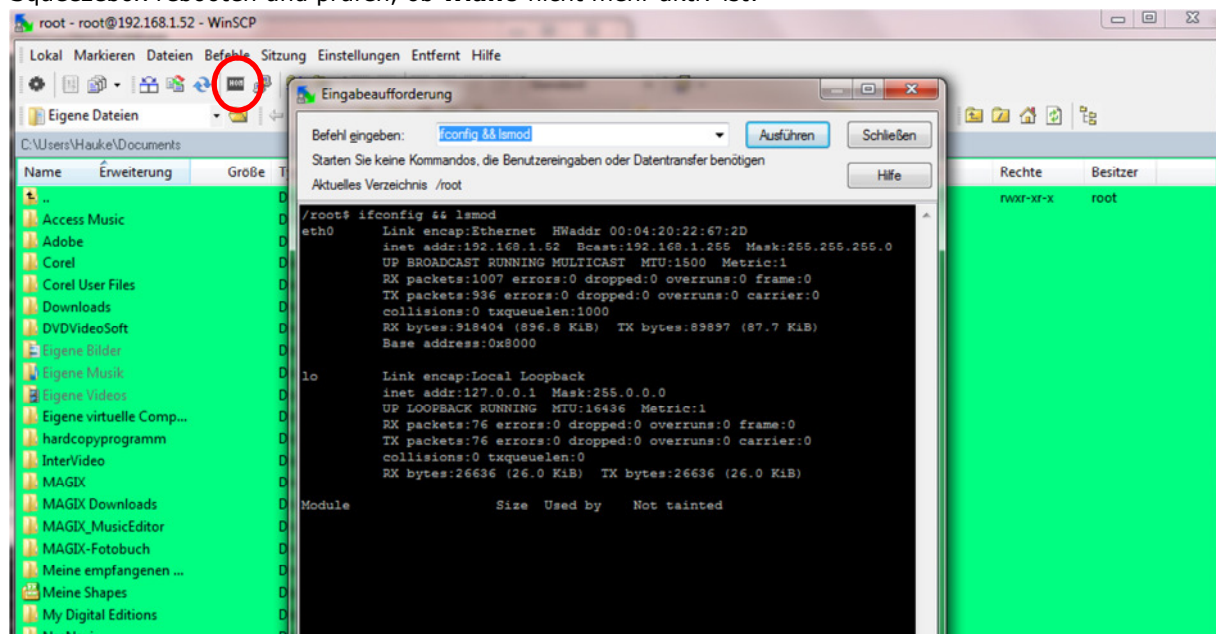
Prüfung, ob WLAN (Adapter: wlan0) aktiv ist. Mit dem Befehl **ifconfig && lsmod**:



The screenshot shows the WinSCP interface with the command `ifconfig && lsmod` entered in the command window. The output shows the status of the `eth0` and `lo` interfaces, followed by the `wlan0` interface, which is active. The `lsmod` output shows the `sd8686` module loaded.

Größe	Geändert	Rechte	Besitzer
01.01.1970		rw-r-xr-x	root
01.01.1970		rw-r-xr-x	root
01.01.1970		rw-r-xr-x	root
08.03.2011 15:38		rw-r-xr-x	root
01.01.1970		rw-r-xr-x	root
01.01.1970		rw-r-xr-x	root
01.01.1970		rw-r-xr-x	root
01.01.1970		rw-r-xr-x	root
01.01.1970		rw-r-xr-x	root
01.01.1970		rw-r-xr-x	root
01.01.1970		rw-r-xr-x	root
08.03.2011 15:34		rw-r-xr-x	root
01.01.1970		rw-r-xr-x	root
01.01.1970		rw-r-xr-x	root
3.404	01.01.1970	rw-r-xr-x	root

Squeezebox rebooten und prüfen, ob **wlan0** nicht mehr aktiv ist:



The screenshot shows the WinSCP interface with the command `ifconfig && lsmod` entered in the command window. The output shows the status of the `eth0` and `lo` interfaces, but the `wlan0` interface is no longer listed, indicating it is no longer active.

Rechte	Besitzer
rw-r-xr-x	root